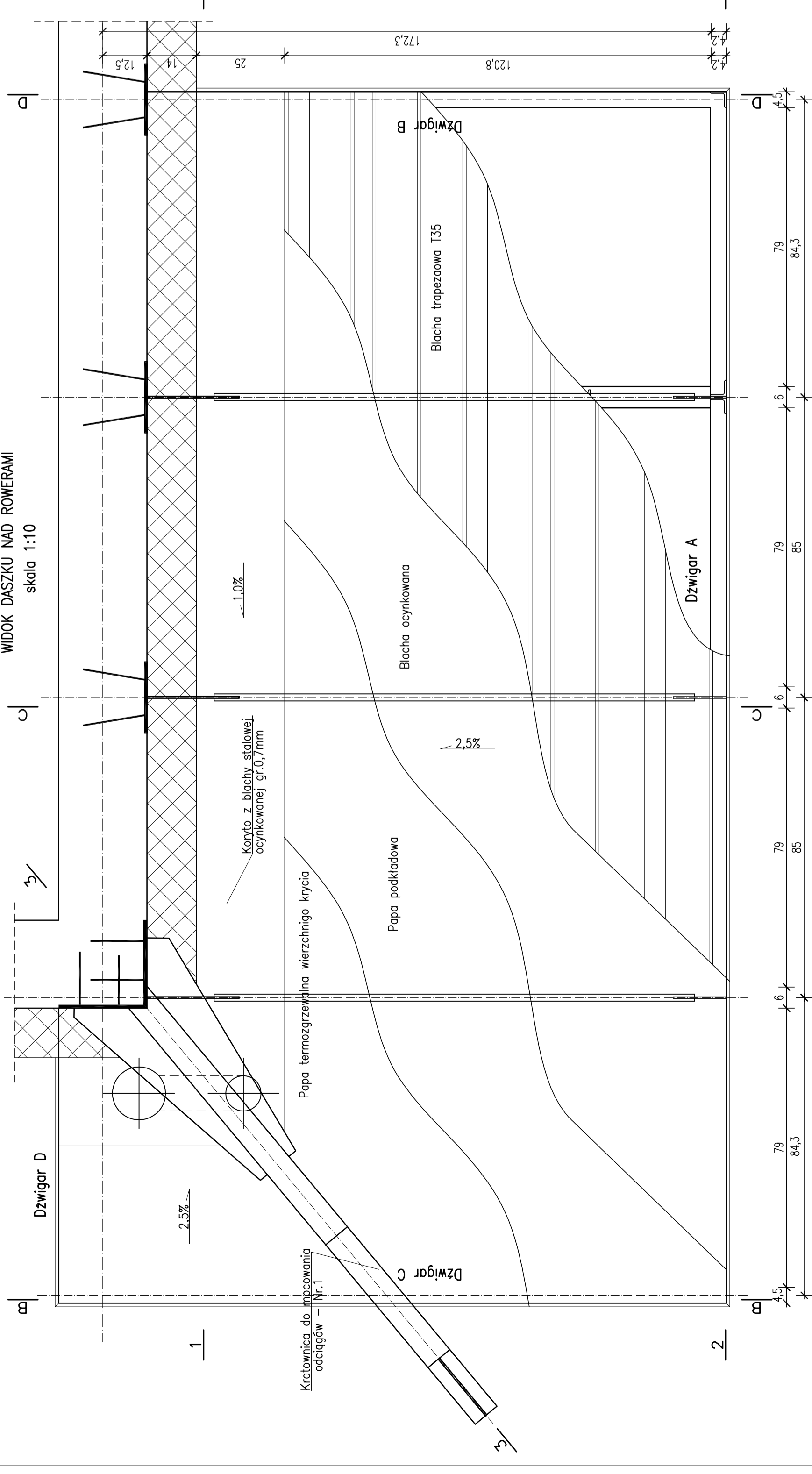
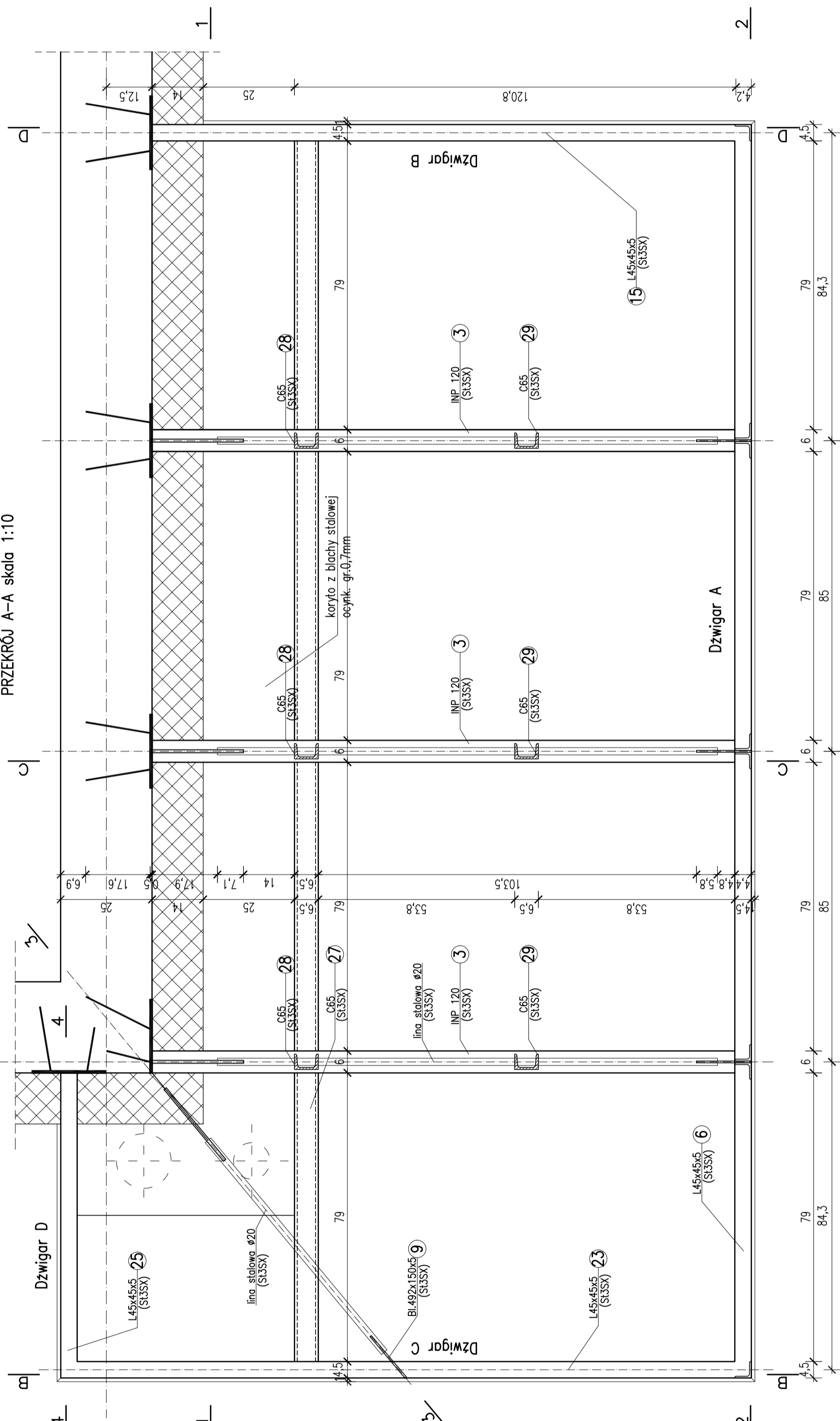


DOK DASZKU NAD ROWERAMI
skała 1:10

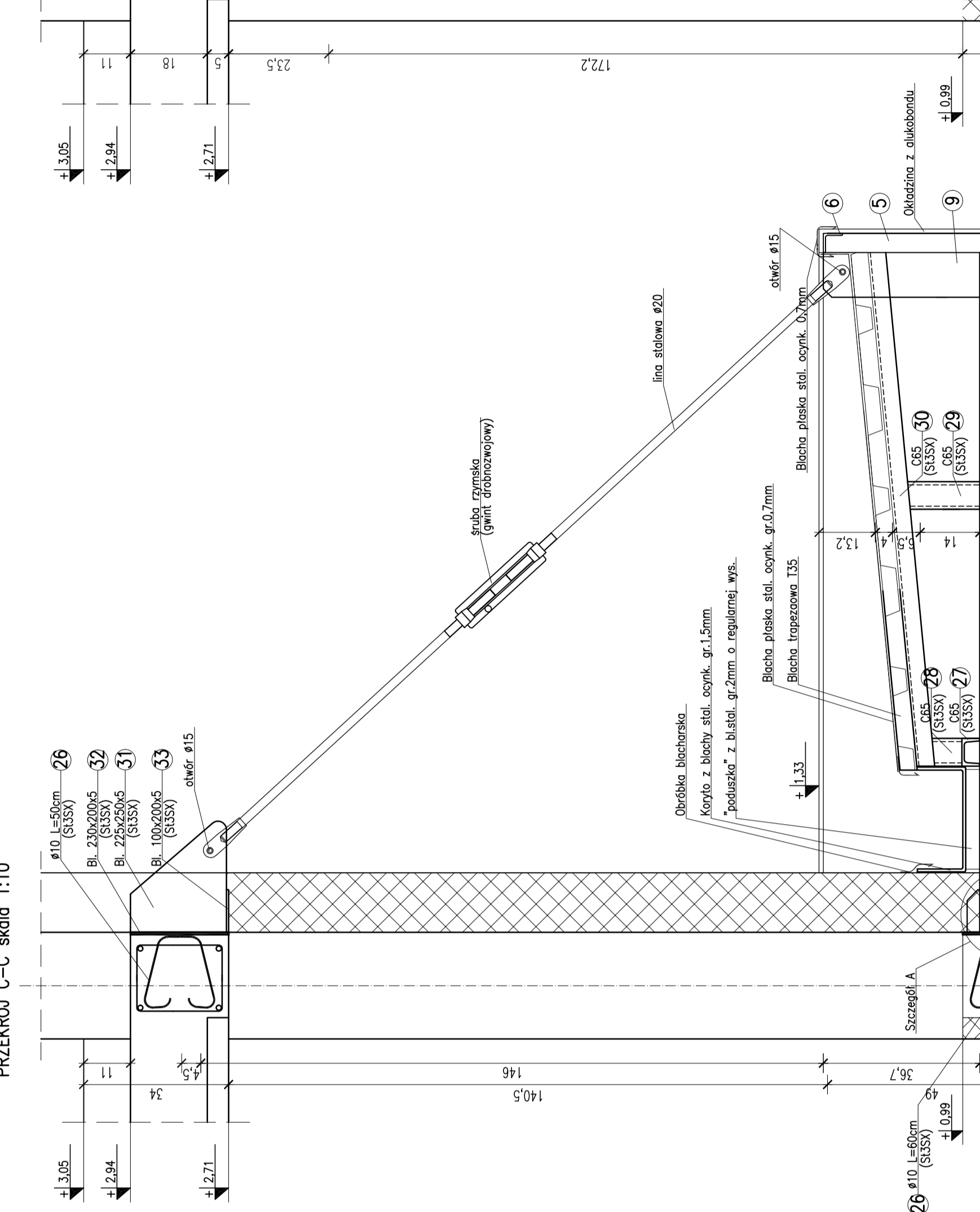
skala 1:10



PRZEKRÓJ A-A skala 1:10

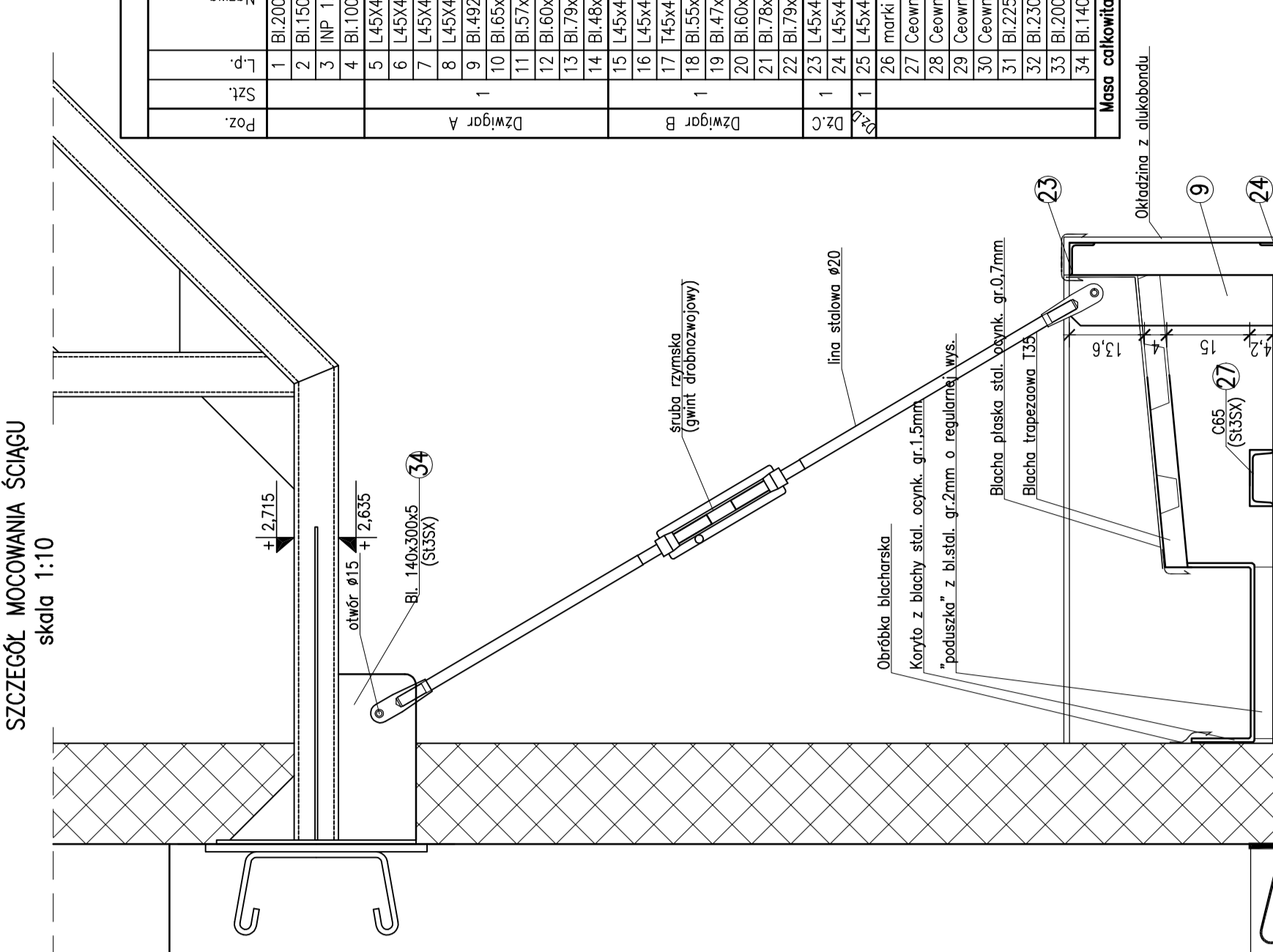


PRZEMIAW 2-2 SKŁAD 1:10



SZCZEGÓŁ MOCOWANIA ŚCIĄGU

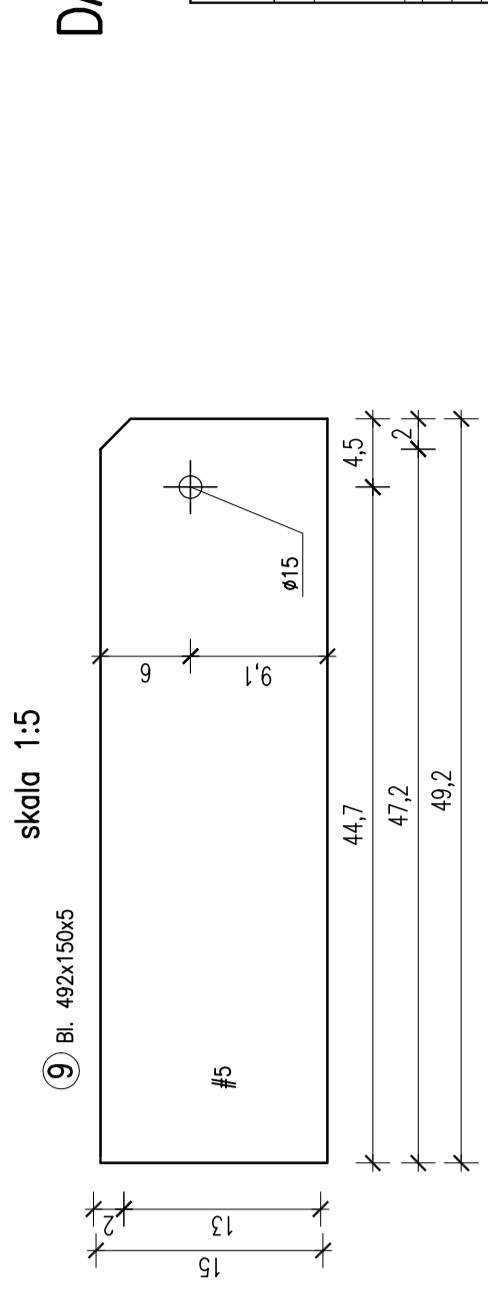
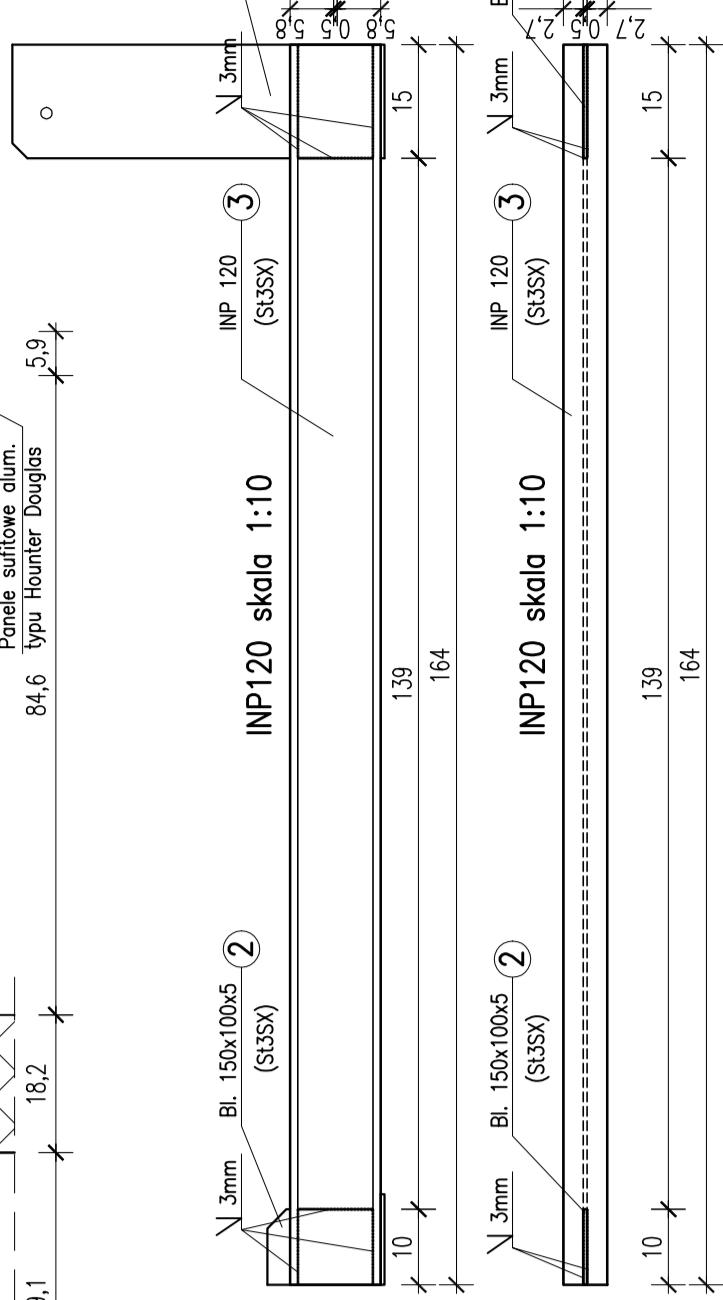
Waktu 1:10



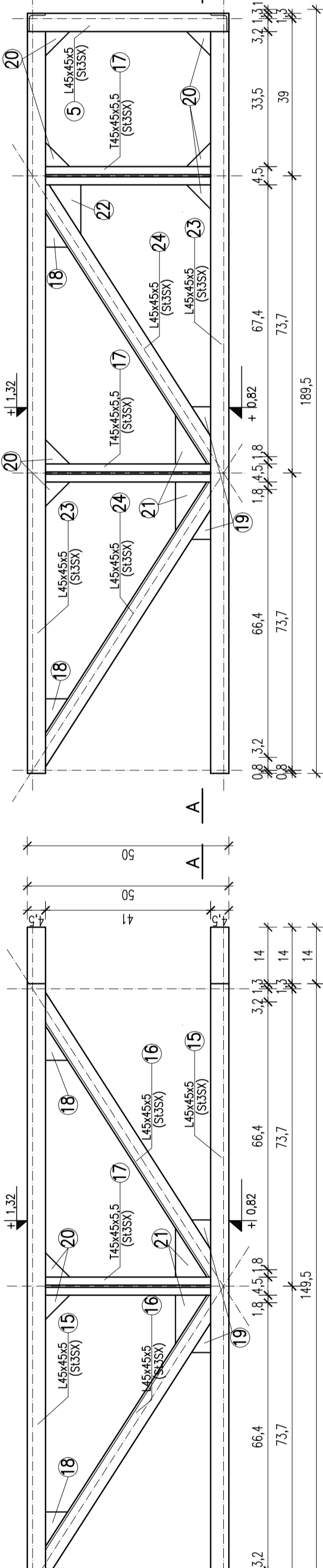
ZESZYWIENIE STYPU										Masy	
Stp.	Wzrost	Wzrost	Wzrost	Wzrost	Wzrost	Wzrost	Wzrost	Wzrost	Wzrost	Wzrost	Wzrost
Stp.	Wzrost	Wzrost	Wzrost	Wzrost	Wzrost	Wzrost	Wzrost	Wzrost	Wzrost	Wzrost	Wzrost
1	20,200x20x5	BL	50	S153	1	5	1,532	2,660			
2	NP 20	NP	160	S153	1	5	0,350	2,448			
3	NP 20	NP	160	S153	1	5	17,86	2,534			
4	NP 100x120x5	BL	50	S153	1	5	0,472	2,358			
5	14x50x5	BL	50	S153	6	1	0,1690	1,010			
6	14x50x5	BL	50	S153	2	2	2,129	2,238			
7	14x50x5	BL	50	S153	2	2	2,294	2,631			
8	14x50x5	BL	62	S153	2	2	2,294	2,631			
9	14x50x5	BL	62	S153	2	2	2,294	2,631			
10	14x50x5	BL	62	S153	2	2	2,294	2,631			
11	14x50x5	BL	62	S153	2	2	2,294	2,631			
12	14x50x5	BL	62	S153	2	2	2,294	2,631			
13	14x50x5	BL	62	S153	2	2	2,294	2,631			
14	14x50x5	BL	62	S153	2	2	2,294	2,631			
15	14x50x5	BL	62	S153	2	2	2,294	2,631			
16	14x50x5	BL	62	S153	2	2	2,294	2,631			
17	14x50x5	BL	62	S153	2	2	2,294	2,631			
18	14x50x5	BL	62	S153	2	2	2,294	2,631			
19	14x50x5	BL	62	S153	2	2	2,294	2,631			
20	14x50x5	BL	62	S153	2	2	2,294	2,631			
21	14x50x5	BL	62	S153	2	2	2,294	2,631			
22	14x50x5	BL	62	S153	2	2	2,294	2,631			
23	14x50x5	BL	62	S153	2	2	2,294	2,631			
24	14x50x5	BL	62	S153	2	2	2,294	2,631			
25	14x50x5	BL	62	S153	2	2	2,294	2,631			
26	14x50x5	BL	62	S153	2	2	2,294	2,631			
27	14x50x5	BL	62	S153	2	2	2,294	2,631			
28	14x50x5	BL	62	S153	2	2	2,294	2,631			
29	14x50x5	BL	62	S153	2	2	2,294	2,631			
30	14x50x5	BL	62	S153	2	2	2,294	2,631			
31	14x50x5	BL	62	S153	2	2	2,294	2,631			
32	14x50x5	BL	62	S153	2	2	2,294	2,631			
33	14x50x5	BL	62	S153	2	2	2,294	2,631			
34	14x50x5	BL	62	S153	2	2	2,294	2,631			
35	14x50x5	BL	62	S153	2	2	2,294	2,631			
36	14x50x5	BL	62	S153	2	2	2,294	2,631			
37	14x50x5	BL	62	S153	2	2	2,294	2,631			
38	14x50x5	BL	62	S153	2	2	2,294	2,631			
39	14x50x5	BL	62	S153	2	2	2,294	2,631			
40	14x50x5	BL	62	S153	2	2	2,294	2,631			
41	14x50x5	BL	62	S153	2	2	2,294	2,631			
42	14x50x5	BL	62	S153	2	2	2,294	2,631			
43	14x50x5	BL	62	S153	2	2	2,294	2,631			
44	14x50x5	BL	62	S153	2	2	2,294	2,631			
45	14x50x5	BL	62	S153	2	2	2,294	2,631			
46	14x50x5	BL	62	S153	2	2	2,294	2,631			
47	14x50x5	BL	62	S153	2	2	2,294	2,631			
48	14x50x5	BL	62	S153	2	2	2,294	2,631			
49	14x50x5	BL	62	S153	2	2	2,294	2,631			
50	14x50x5	BL	62	S153	2	2	2,294	2,631			
51	14x50x5	BL	62	S153	2	2	2,294	2,631			
52	14x50x5	BL	62	S153	2	2	2,294	2,631			
53	14x50x5	BL	62	S153	2	2	2,294	2,631			
54	14x50x5	BL	62	S153	2	2	2,294	2,631			
55	14x50x5	BL	62	S153	2	2	2,294	2,631			
56	14x50x5	BL	62	S153	2	2	2,294	2,631			
57	14x50x5	BL	62	S153	2	2	2,294	2,631			
58	14x50x5	BL	62	S153	2	2	2,294	2,631			
59	14x50x5	BL	62	S153	2	2	2,294	2,631			
60	14x50x5	BL	62	S153	2	2	2,294	2,631			
61	14x50x5	BL	62	S153	2	2	2,294	2,631			
62	14x50x5	BL	62	S153	2	2	2,294	2,631			
63	14x50x5	BL	62	S153	2	2	2,294	2,631			
64	14x50x5	BL	62	S153	2	2	2,294	2,631			
65	14x50x5	BL	62	S153	2	2	2,294	2,631			
66	14x50x5	BL	62	S153	2	2	2,294	2,631			
67	14x50x5	BL	62	S153	2	2	2,294	2,631			
68	14x50x5	BL	62	S153	2	2	2,294	2,631			
69	14x50x5	BL	62	S153	2	2	2,294	2,631			
70	14x50x5	BL	62	S153	2	2	2,294	2,631			
71	14x50x5	BL	62	S153	2	2	2,294	2,631			
72	14x50x5	BL	62	S153	2	2	2,294	2,631			
73	14x50x5	BL	62	S153	2	2	2,294	2,631			
74	14x50x5	BL	62	S153	2	2	2,294	2,631			
75	14x50x5	BL	62	S153	2	2	2,294	2,631			
76	14x50x5	BL	62	S153	2	2	2,294	2,631			
77	14x50x5	BL	62	S153	2	2	2,294	2,631			
78	14x50x5	BL	62	S153	2	2	2,294	2,631			
79	14x50x5	BL	62	S153	2	2	2,294	2,631			
80	14x50x5	BL	62	S153	2	2	2,294	2,631			
81	14x50x5	BL	62	S153	2	2	2,294	2,631			
82	14x50x5	BL	62	S153	2	2	2,294	2,631			
83	14x50x5	BL	62	S153	2	2	2,294	2,631			
84	14x50x5	BL	62	S153	2	2	2,294	2,631			
85	14x50x5	BL	62	S153	2	2	2,294	2,631			
86	14x50x5	BL	62	S153	2	2	2,294	2,631			
87	14x50x5	BL	62	S153	2	2	2,294	2,631			
88	14x50x5	BL	62	S153	2	2	2,294	2,631			
89	14x50x5	BL	62	S153	2	2	2,294	2,631			
90	14x50x5	BL	62	S153	2	2	2,294	2,631			
91	14x50x5	BL	62	S153	2	2	2,294	2,631			
92	14x50x5	BL	62	S153	2	2	2,294	2,631			
93	14x50x5	BL	62	S153	2	2	2,294	2,631			
94	14x50x5	BL	62	S153	2	2	2,294	2,631			
95	14x50x5	BL	62	S153	2	2	2,294	2,631			
96	14x50x5	BL	62	S153	2	2	2,294	2,631			
97	14x50x5	BL	62	S153	2	2	2,294	2,631			
98	14x50x5	BL	62	S153	2	2	2,294	2,631			
99	14x50x5	BL	62	S153	2	2	2,294	2,631			
100	14x50x5	BL	62	S153	2	2	2,294	2,631			
101	14x50x5	BL	62	S153	2	2	2,294	2,631			
102	14x50x5	BL	62	S153	2	2	2,294	2,631			
103	14x50x5	BL	62	S153	2	2	2,294	2,631			
104	14x50x5	BL	62	S153	2	2	2,294	2,631			
105	14x50x5	BL	62	S153	2	2	2,294	2,631			
106	14x50x5	BL	62	S153	2	2	2,294	2,631			
107	14x50x5	BL	62	S153	2	2	2,294	2,631			
108	14x50x5	BL	62	S153	2	2	2,294	2,631			
109	14x50x5	BL	62	S153	2	2	2,294	2,631			
110	14x50x5	BL	62	S153	2	2	2,294	2,631			
111	14x50x5	BL	62	S153	2	2	2,294	2,631			
112	14x50x5	BL	62	S153	2	2	2,294	2,631			
113	14x50x5	BL	62	S153	2	2	2,294	2,631			
114	14x50x5	BL	62	S153	2	2	2,294	2,631			
115	14x50x5	BL	62	S153	2	2	2,294	2,631			
116	14x50x5	BL	62	S153	2	2	2,294	2,631			
117	14x50x5	BL	62	S153	2	2	2,294	2,631			
118	14x50x5	BL	62	S153	2	2	2,294	2,631			
119	14x50x5	BL	62	S153	2	2	2,294	2,631			
120	14x50x5	BL	62	S153	2	2	2,294	2,631			
121	14x50x5	BL	62	S153	2	2	2,294	2,631			
122	14x50x5	BL	62	S153	2	2	2,294	2,631			
123	14x50x5	BL	62	S153	2	2	2,294	2,631			
124	14x50x5	BL	62	S153	2	2	2,294	2,631			
125	14x50x5	BL	62	S153	2	2	2,294	2,631			
126	14x50x5	BL	62	S153	2	2	2,294	2,631			
127	14x50x5	BL	62	S153	2	2	2,294	2,631			
128	14x50x5	BL	62	S153	2	2	2,294	2,631			
129	14x50x5	BL	62	S153	2	2	2,294	2,631			
130	14x50x5	BL	62	S153	2	2	2,294	2,631			
131	14x50x5	BL	62	S153	2	2	2,294	2,631			
132	14x50x5	BL	62	S153	2	2	2,294	2,631			
133	14x50x5	BL	62	S153	2	2	2,294	2,631			
134	14x50x5	BL	62	S153	2	2	2,294	2,631			
135	14x50x5	BL	62	S153	2	2	2,294	2,631			
136	14x50x5	BL	62	S153	2	2	2,294	2,631			
137	14x50x5	BL	62	S153	2	2	2,294	2,631			
138	14x50x5	BL	62	S153	2	2	2,294				

- [illegible]

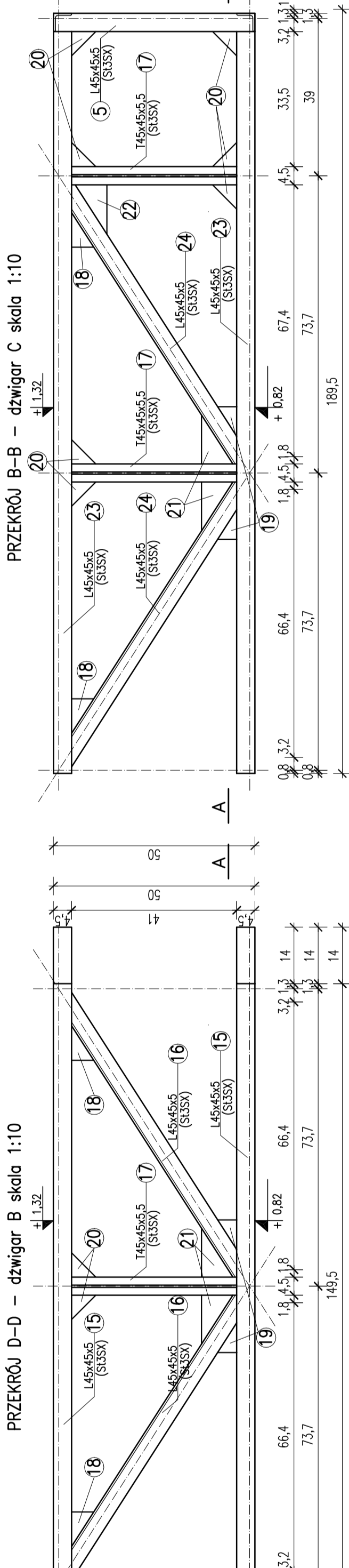
Stal: St3SX
elektroda: ER



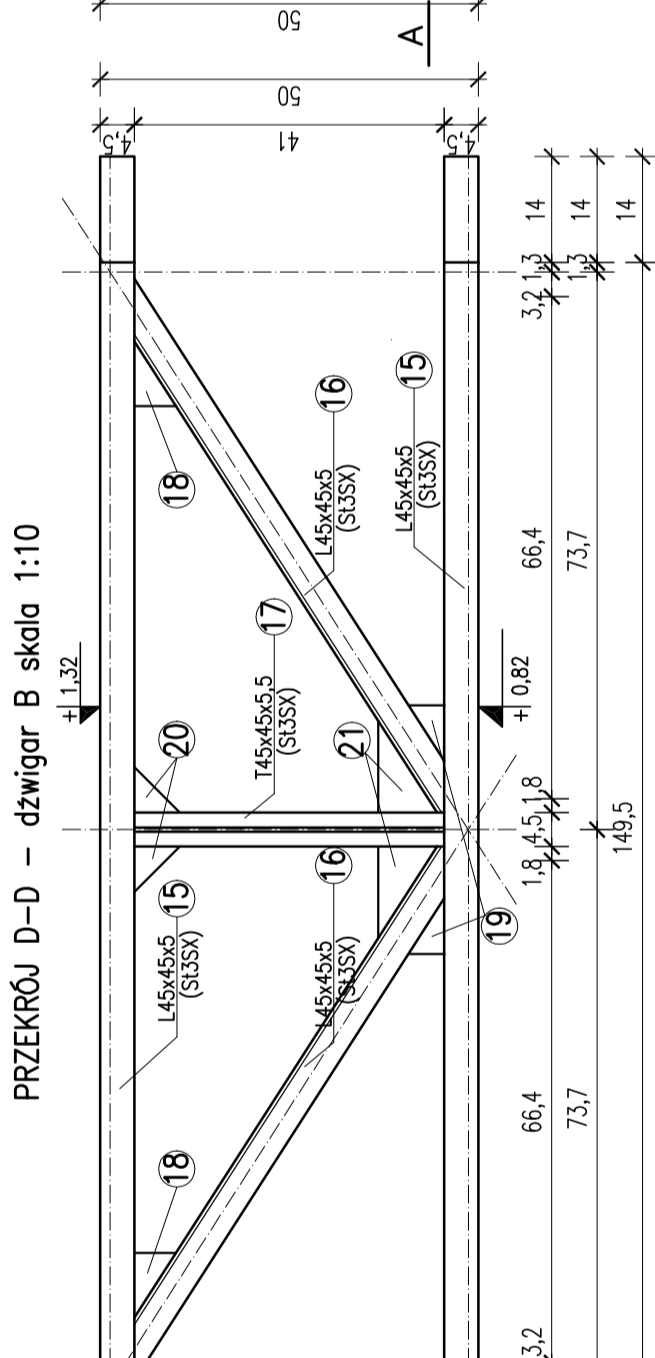
ODASZEK NAD STANOWISKIEM DLA ROWERÓW

[illegible]

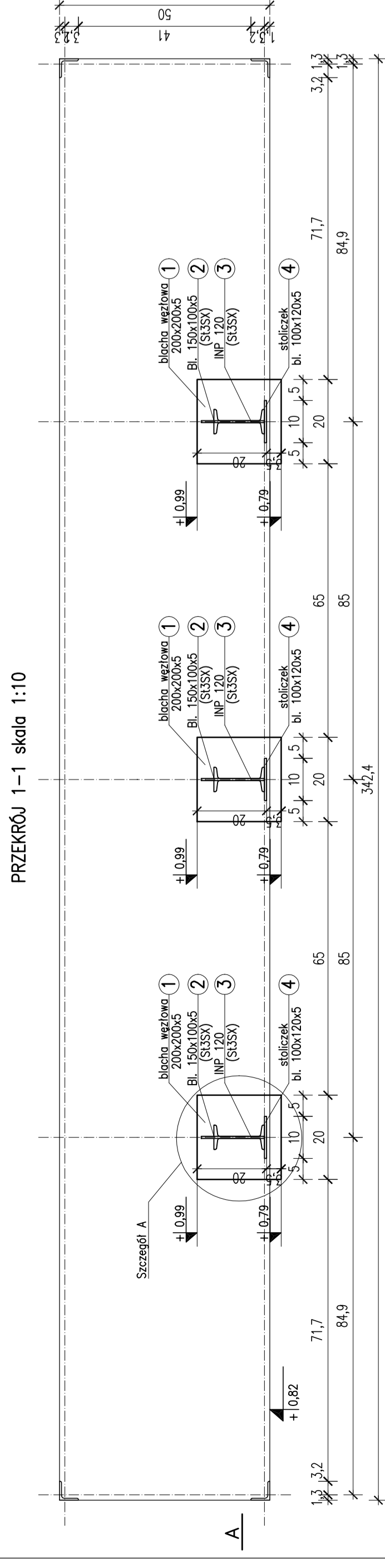
PRZEKRÓJ B-B – dźwigar C skala 1:10



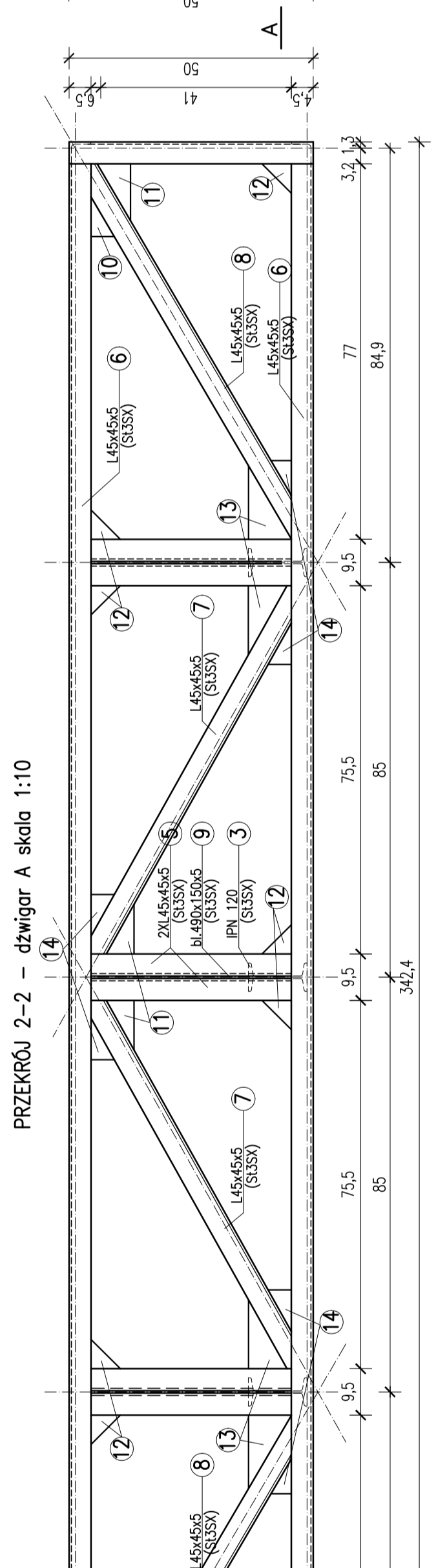
PRZEKRÓJ D-D – dźwiąg B skala 1:10



UR7FKR6J 1-1 skola 1:10



PRZEKRÓJ 2-2 - dźwignia A skłona 1:10



PRZEKRÓJ

